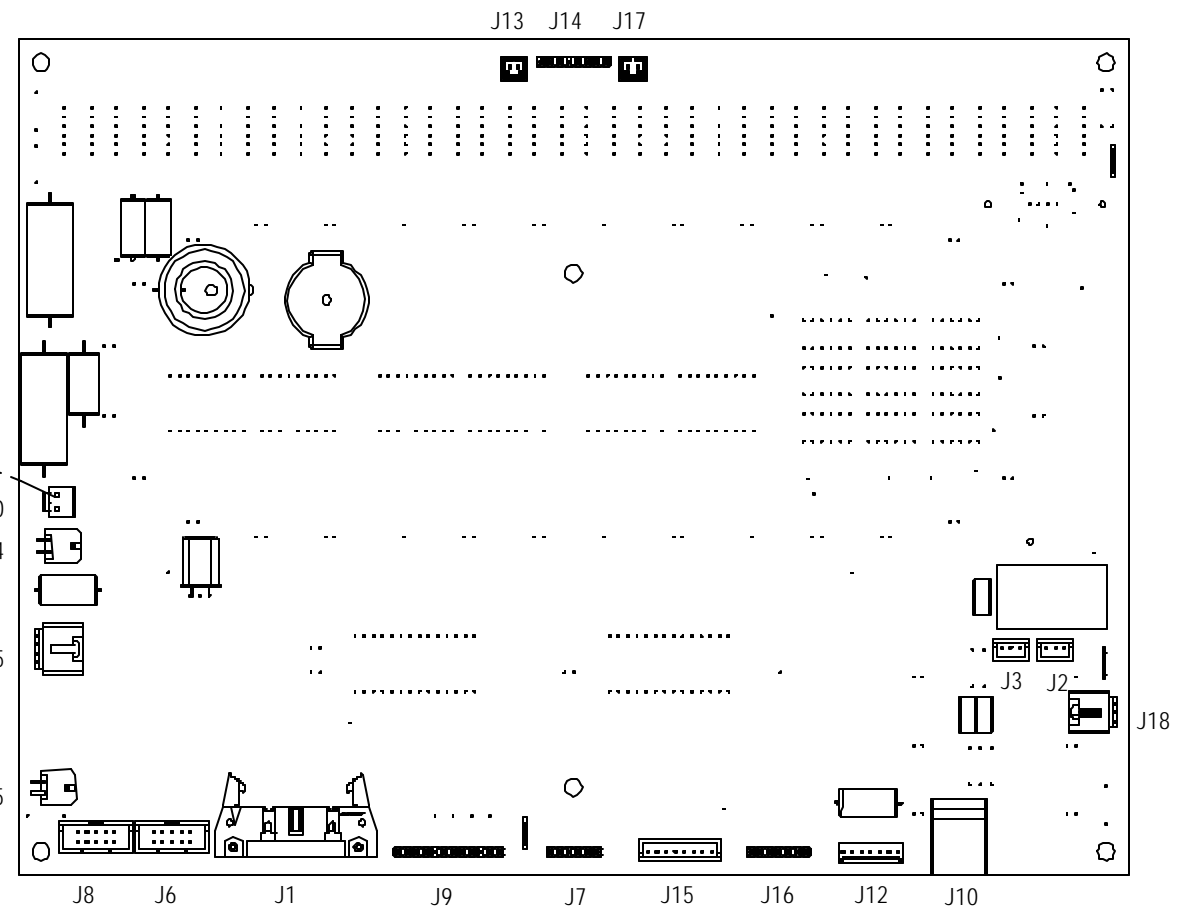
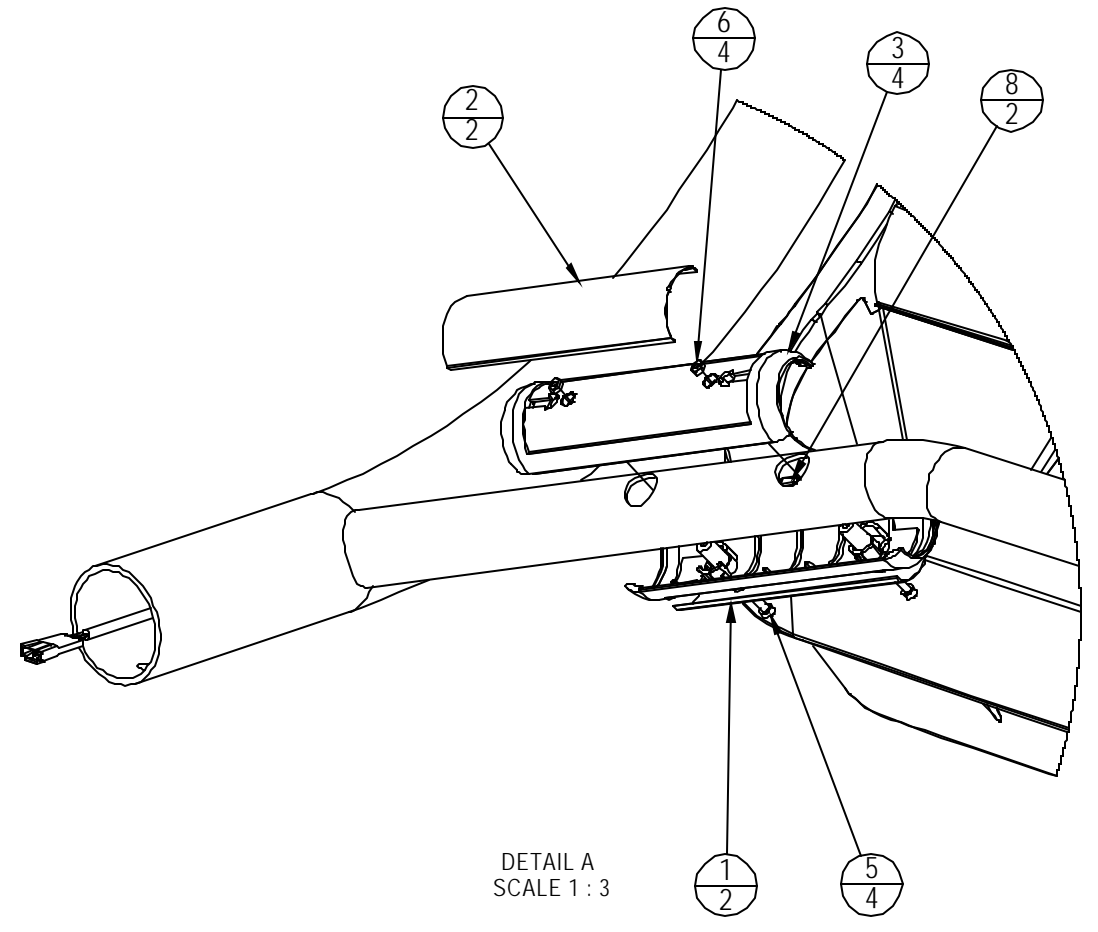
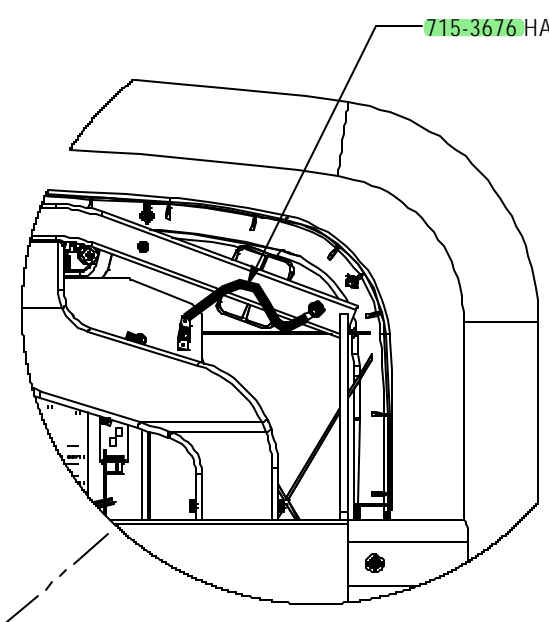


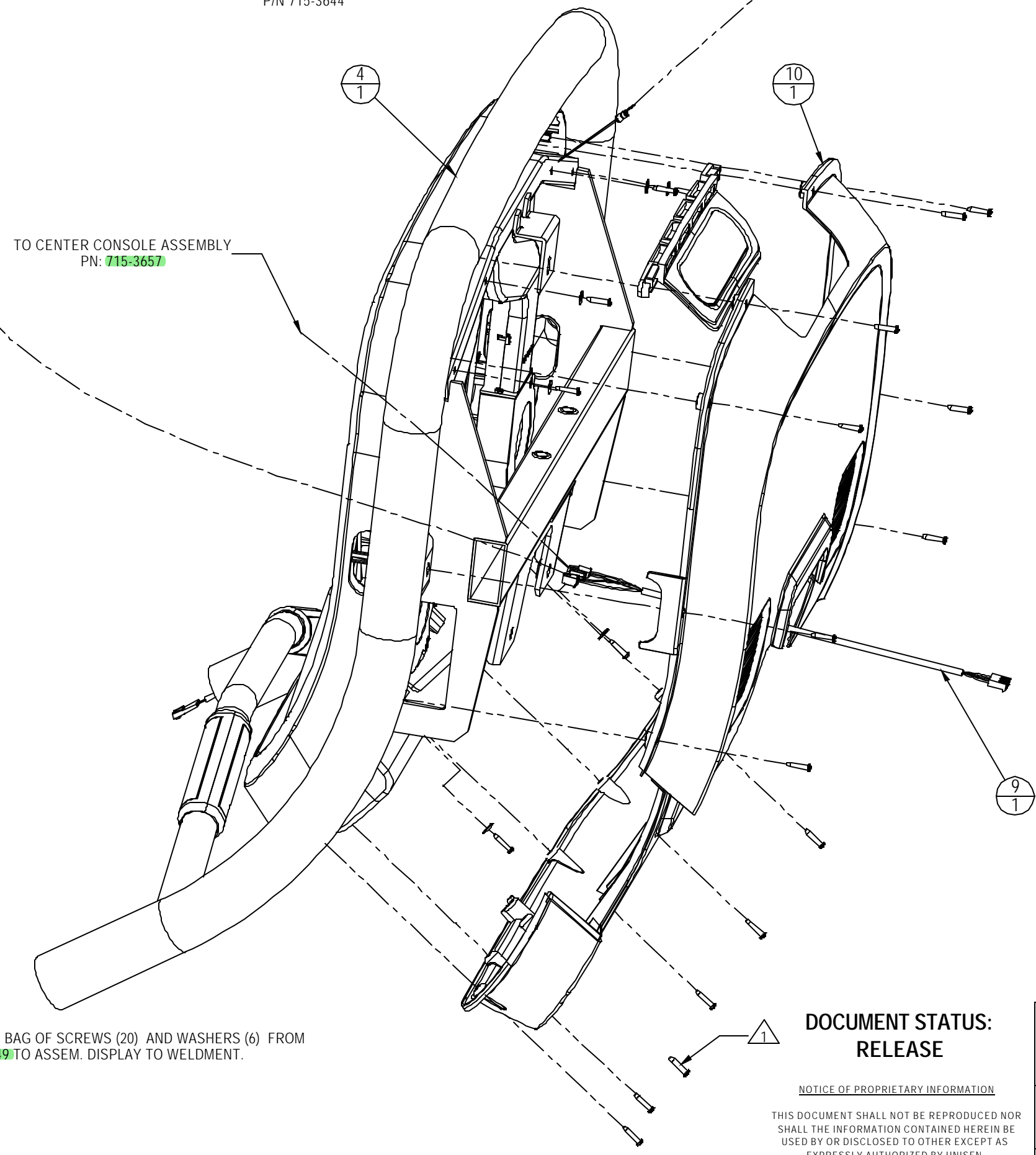
REVISIONS				
REV.	DATE	DESCRIPTION	ECO	BY
A	04-25-07	PRODUCTION RELEASE.	11583	VC
B	05-23-07	ADDED PAGE 2 OF 2 AND UPDATED NOTE 1.	11628	SJK



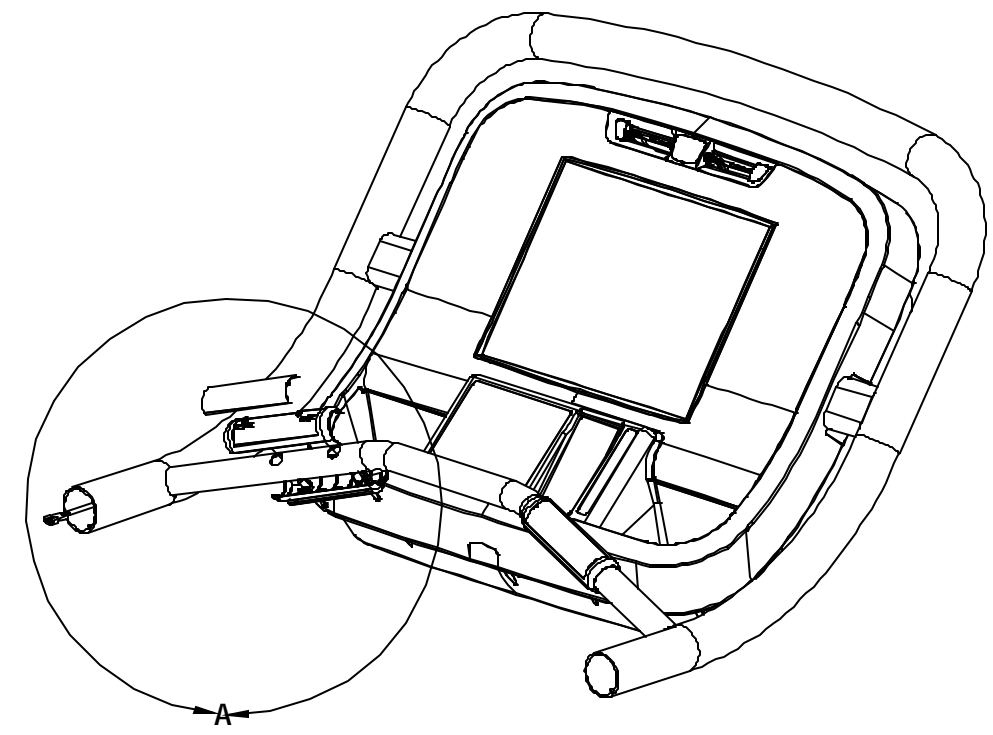
CONNECTOR DESIGNATIONS ON PCB
P/N 715-3644



DETAIL A
SCALE 1:3



TO CENTER CONSOLE ASSEMBLY
PN: 715-3657



ITEM NO.	PART NUMBER	DESCRIPTION	PRINT/QTY.
1	020-6549	PLATE, HR, BOTTOM	2
2	020-6555	PLATE, HR, UNIVERSAL, TOP	2
3	020-6556	GRIP, HR, UNIVERSAL, BLK	4
4	020-7037	RAIL, TOP, HR, PRO TR	1
5	110-3147	SCREW, M3x35, SHC, ISO4762	4
6	110-3148	NUT, M3, HEXAGON, ISO4762	4
7	715-3416	ASSY, CABLE, STOP SWITCH, EXT	1
8	715-3425	ASSY, CABLE, SPLITTER HR GRIP	1
9	715-3678	HARNESS, DC SUPPLY, PRO TR	1
10	715-3649	ASSY, MAIN CONSOLE, E-TR	1

NOTES:
 USE PACKAGED BAG OF SCREWS (20) AND WASHERS (6) FROM ASSEM. 715-3649 TO ASSEM. DISPLAY TO WELDMENT.

DOCUMENT STATUS:
RELEASE

NOTICE OF PROPRIETARY INFORMATION
 THIS DOCUMENT SHALL NOT BE REPRODUCED NOR SHALL THE INFORMATION CONTAINED HEREIN BE USED BY OR DISCLOSED TO OTHER EXCEPT AS EXPRESSLY AUTHORIZED BY UNISEN

MATERIAL SEE BOM	TOLERANCES UNLESS OTHERWISE SPECIFIED X.XXX ± .010 (0.25MM) X.XX ± .030 (0.76MM) X.X ± .050 (1.27MM) X ± .125 (3.20MM) ANGLES ± .2° FRACTIONS ± 1/32
FINISH N/A	DRAWN FJM 12-01-06
VENDOR: N/A	CHECKED
	APPROVED
	U.O.M. INCH

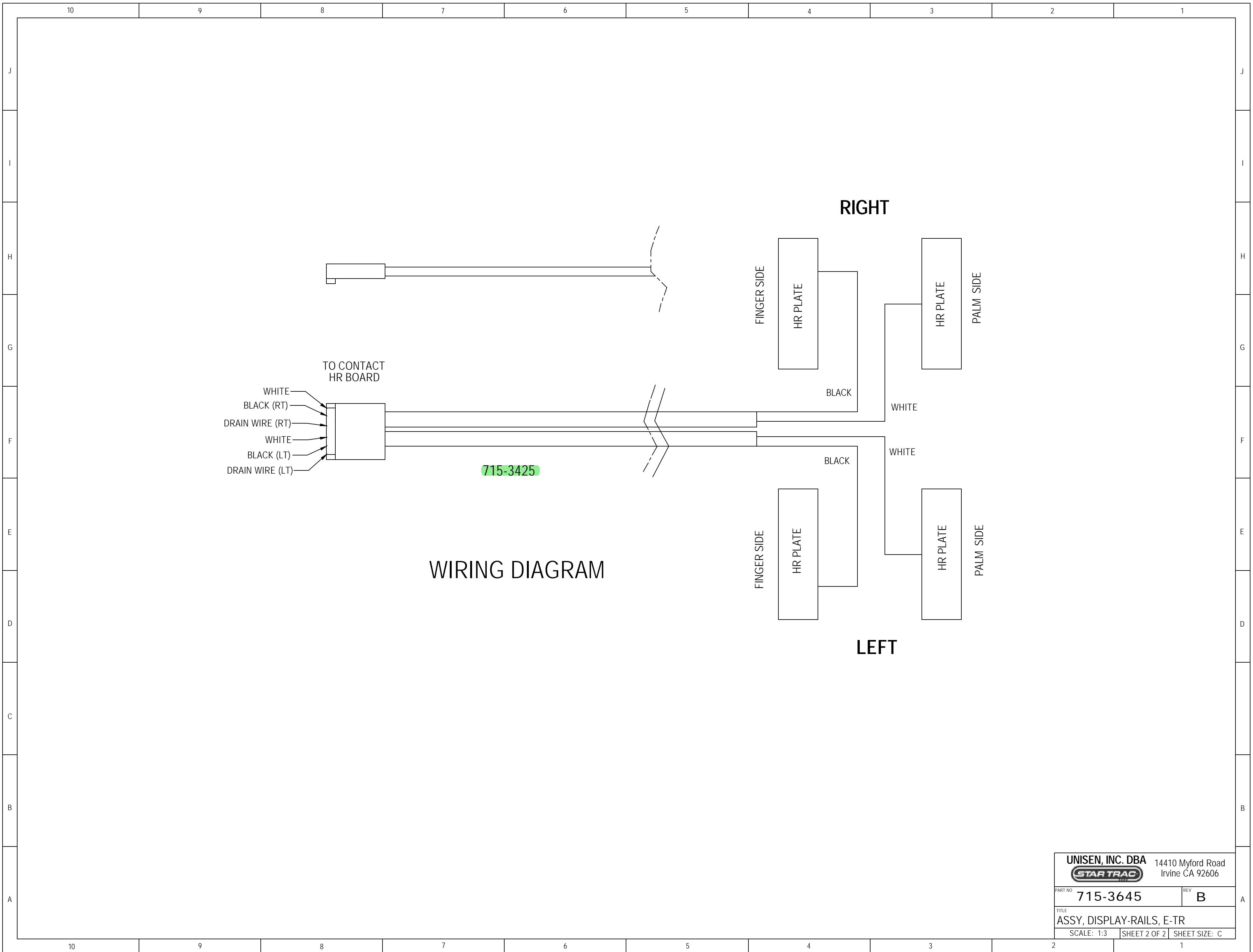
UNISEN, INC. DBA

 14410 Myford Road
 Irvine CA 92606

PART NO. 715-3645 REV B

TITLE
 ASSY, DISPLAY-RAILS, E-TR

SCALE: 1:4 SHEET 1 OF 2 SHEET SIZE: C



UNISEN, INC. DBA		14410 Myford Road	
		Irvine CA 92606	
PART NO	715-3645	REV	B
TITLE ASSY, DISPLAY-RAILS, E-TR			
SCALE: 1:3		SHEET 2 OF 2	SHEET SIZE: C